



# **Third- Party Course Authoring Guide**

Absorb LMS Support

# Table of Contents

Introduction .....	3
Important Notes.....	4
SCORM Dispatch Files.....	4
The End of Adobe Flash.....	4
Articulate Product Information.....	4
Articulate Reporting Bug.....	4
Articulate & SCORM 1.2 .....	4
Absorb LMS & E-Learning Modules.....	5
How E-Learning Modules are Reported.....	5
Absorb LMS E-Learning Reporting Logic Map.....	6
E-Learning Modules.....	7
Recommended Publish Settings.....	7
Package Types .....	8
Publish Formats.....	8
Tracking Completion .....	8
Player Settings .....	9
Absorb LMS & Videos.....	10
Recommended Publish Settings.....	10
Examples.....	11
Resources.....	12

# Introduction

Welcome to the Absorb LMS Third-Party Course Authoring Guide!

This document provides general information about Absorb LMS and how it interprets data from third-party content, such as e-learning modules, and lists recommended publish settings.

This guide does not provide instruction on how to use individual course authoring programs, nor does it dive into all the variations presented when publishing content (i.e., JavaScript commands, slide variables, etc.).

**We highly recommend that you test your third-party content before making it available to learners to ensure the project launches, behaves, and reports as intended.**

You can test e-learning content for free by creating an account at [SCORM Cloud](#).

If you require assistance with the building, testing, or maintenance of your training content, please contact the respective course authoring support team.

- [Articulate Product Support](#)
- [Adobe Captivate Learn & Support](#)
- [TechSmith Camtasia Product Support](#)

## Important Notes

### SCORM Dispatch Files

The configurations required for SCORM Dispatch Package Files to fully operate do not meet our security standards. Absorb LMS does not support the usage of dispatch files for third-party e-learning content.

SCORM Dispatch Package Files uploaded into your instance of Absorb LMS may not launch and/or record user consumption.

### The End of Adobe Flash

[Adobe Flash will be retired fully by the end of 2020.](#) Be mindful of the impact this may have on your existing content. For more information specific to Articulate, visit their announcement article [here](#).

## Articulate Product Information

### Articulate Reporting Bug

Articulate products include a bug that causes modules to report a status of "Failed" in situations where the learner completes the module and receives a passing quiz score.

**Important: Publish your Articulate modules that contain a quiz with either "Passed/Failed" or "Pass/Incomplete" report settings.**

The use of "Completed/Incomplete" or "Completed/Failed" will result in errors. Read more [here](#).

### Articulate & SCORM 1.2

Articulate products automatically include a Mastery Score setting in all SCORM 1.2 modules that include a graded quiz. The Mastery Score overrides the LMS Reporting value selected when the SCORM package was published.

For example, if you had selected "Complete/Incomplete" as the LMS Reporting pair, the Mastery Score will change the values presented to either "Passed" or "Failed."

# Absorb LMS & E-Learning Modules

## How E-Learning Modules are Reported

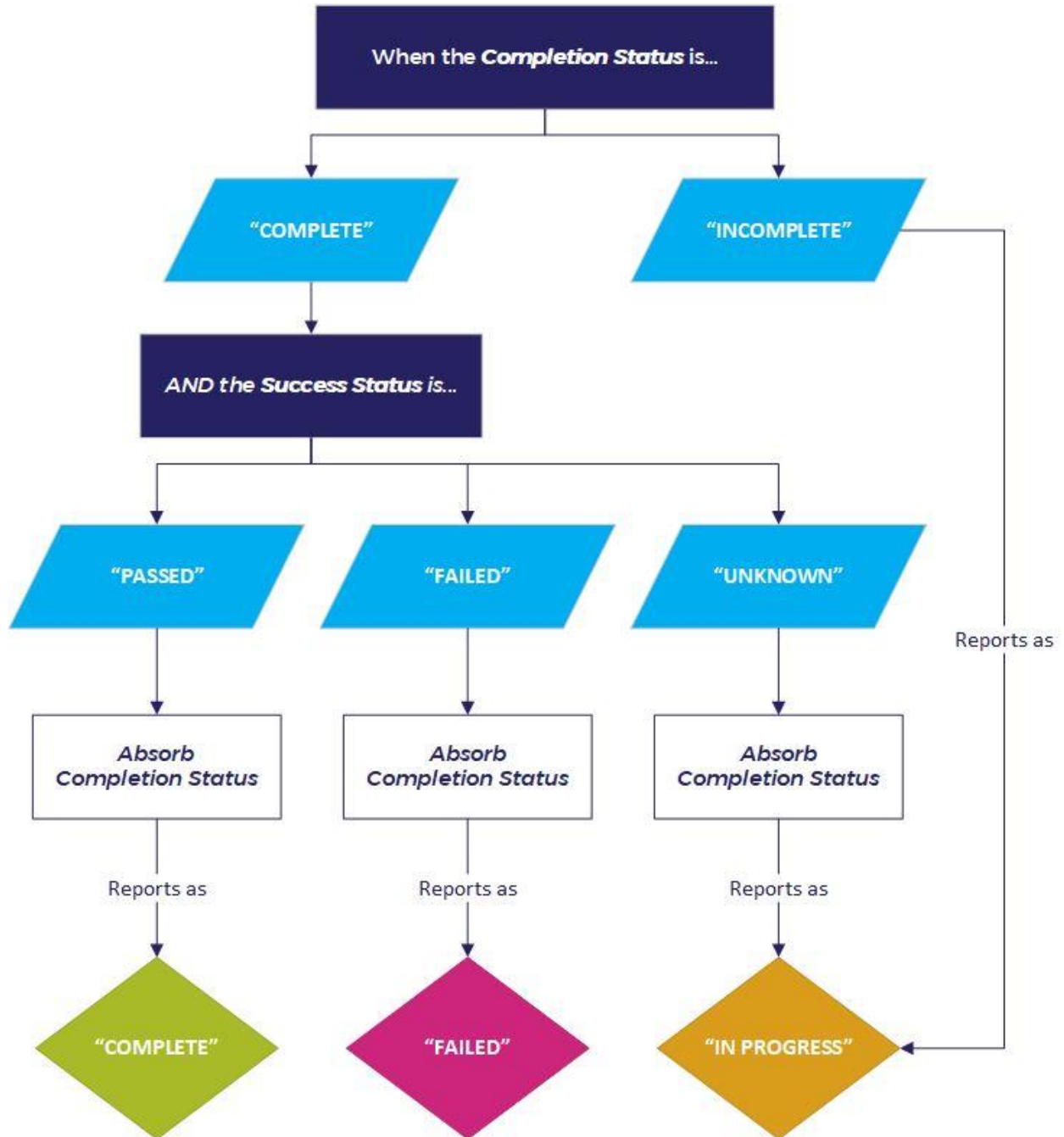
While your content authoring tool may provide multiple options to select when identifying a status value, Absorb LMS will only display the following values:

- Complete
- Not Complete
- In Progress
- Failed

Absorb LMS reports both the *Completion Status* and *Success Status* of an e-learning module.

Status	Information
<b>Completion Status</b>	<p>The Completion Status informs the LMS if the e-learning module was successfully finished. This value can present as one of the following:</p> <ul style="list-style-type: none"> <li>• Complete</li> <li>• In Progress</li> <li>• Failed</li> </ul>
<b>Success Status</b>	<p>The Success Status evaluates the learner's performance of the graded questions contained within the e-learning module. This value can present as one of the following:</p> <ul style="list-style-type: none"> <li>• Passed</li> <li>• Failed</li> <li>• Unknown</li> </ul> <p>Note: Packages that do not provide a Success Status will pass a value of "Unknown." This value will then supply the Completion Status.</p>

# Absorb LMS E-Learning Reporting Logic Map



## E-Learning Modules

### Recommended Publish Settings

Configuration	Recommended Setting(s)	Details
Package Type	Tin Can API	Absorb LMS is SCORM/AICC/Tin Can compliant and successfully presents each package type. We recommend Tin Can API because it is the most recent and robust package type currently available.
Publish Format	HTML5/Flash Fallback	<a href="#">Adobe Flash will be retired fully by the end of 2020</a> , with many web browsers stopping their support before then. We recommend that you re-publish any content that may be affected by this change.
Tracking Completion	Result Slide -or- Slides Viewed	<ul style="list-style-type: none"> <li>• Modules with a graded quiz need to track completion by the score achieved. The Results slide supplies this value.</li> <li>• Modules that do not contain graded quizzes need to track completion by the number of (or percentage of) slides viewed.</li> </ul>
Reporting Status	-	<ul style="list-style-type: none"> <li>• See How E-Learning Modules are Reported for more information on how reporting statuses appear in the LMS.</li> </ul>
Player Settings	Scale to Fill Browser Window	<ul style="list-style-type: none"> <li>• Do not enable product-specific mobile players, such as Articulate Mobile Player.</li> <li>• Do not opt to launch player in a new window.</li> <li>• Do not include alternate exit options.</li> </ul>

## Package Types

Once a third-party project is published, save it as a .zip file. Other file types will not upload correctly to Absorb LMS.

We recommend publishing content as Tin Can API whenever available.

Package Standard	Information
AICC	AICC reports a single status and does not track progress.
Tin Can API	Tin Can API tracks <i>Completion Status</i> and <i>Success Status</i> .
SCORM 1.2	Uses a single status when reporting back to an LMS. Completed, Incomplete, Passed, or Failed.
SCORM 2004	Reports a <i>Completion Status</i> and a <i>Success Status</i> to an LMS.

## Publish Formats

[Adobe Flash will be retired fully by the end of 2020](#), with many web browsers stopping their support before then. We recommend that you re-publish any content that may be affected by this change as HTML5 with Flash Fallback.

## Tracking Completion

Option	Information
Results Slide	When a module contains a graded quiz, tracking completion should be reported by the results slide. <ul style="list-style-type: none"> <li>The course will need a passing threshold defined. Example: 80%</li> </ul>
Slides Viewed	Modules that do not contain graded quizzes need to track completion by the number of (or percentage of) slides viewed.

Note: You cannot adjust a project's threshold value within the Absorb Admin Interface.



## Player Settings

- Configure the player to scale to fill the browser window. This setting is essential for mobile device support.
- Do not select options to use mobile players, such as Articulate Mobile Player.
- Do not include alternative exit options.
- Be mindful of Resume options available per the content authoring tool.

Contingent on various circumstances, using a third-party's content player browser window's "close" or "exit" button to end the course will not accurately report completion or success status back to Absorb LMS.

Absorb LMS launches content in a modal window, which it controls. This default setting serves as a security measure to prevent malicious scripts from closing the window or causing any other harm to your device.

If you need to bypass this, you will need to enable the "Launch in a popup" option for the Lesson's Learning Object.

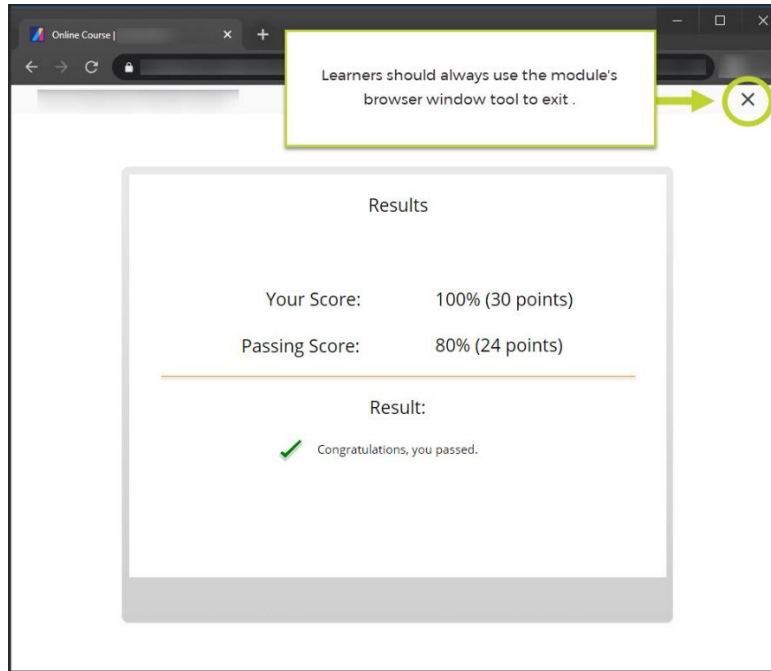
# Absorb LMS & Videos

## Recommended Publish Settings

Configuration	Recommended Setting(s)	Details
Video	MP4 + H.264 Codec	MP4 is a universal video file format, and most digital devices and platforms support it.  H.264 is a video compression codec.
	Progressive Download	Progressive Downloading allows the video to begin playing before the file completes the download.  Learners will expect this functionality from your video content; be sure to enable this setting when publishing video files.  Note: The functionality may be named differently within your specific software (e.g., web optimization, fast start, etc.).
	Frame Rate	There isn't a specific frame rate suggested for Absorb LMS, however it is important to ensure that you publish videos at the same rate it was recorded at.  Attempting to change the frame rate will have a significant negative impact on the video quality.

# Examples

## Exiting E-Learning Modules



1 Example: Exiting E-Learning Module

# Resources

Brand	Links
Articulate	<ul style="list-style-type: none"><li data-bbox="477 359 911 390">• <a href="#">Articulate Product Support</a></li><li data-bbox="477 396 789 428">• <a href="#">E-Learning Heroes</a></li><li data-bbox="477 434 1263 466">• <a href="#">Storyline 3: Publishing a Course for LMS Distribution</a></li></ul>
Adobe	<ul style="list-style-type: none"><li data-bbox="477 562 1003 594">• <a href="#">Adobe Captivate Learn &amp; Support</a></li><li data-bbox="477 600 1224 674">• <a href="#">Upload an Adobe Captivate project to a Learning Management System</a></li></ul>
TechSmith Camtasia	<ul style="list-style-type: none"><li data-bbox="477 722 1070 753">• <a href="#">TechSmith Camtasia Product Support</a></li></ul>
Rustici Software	<ul style="list-style-type: none"><li data-bbox="477 846 732 877">• <a href="#">SCORM Cloud</a></li></ul>